



£995,000

Garrett Mansions, Paddington

Apartment | 1 Bedroom | 1 Bathroom

0207 971 1152



www.bowleys.co.uk



Step Inside

Key Features

- Excellent facilities including a swimming pool, gym, cinema room, sauna, steam room, dining
- Video entry system
- On site building manager
- 24 hour concierge
- Offered to the market chain free
- CCTV

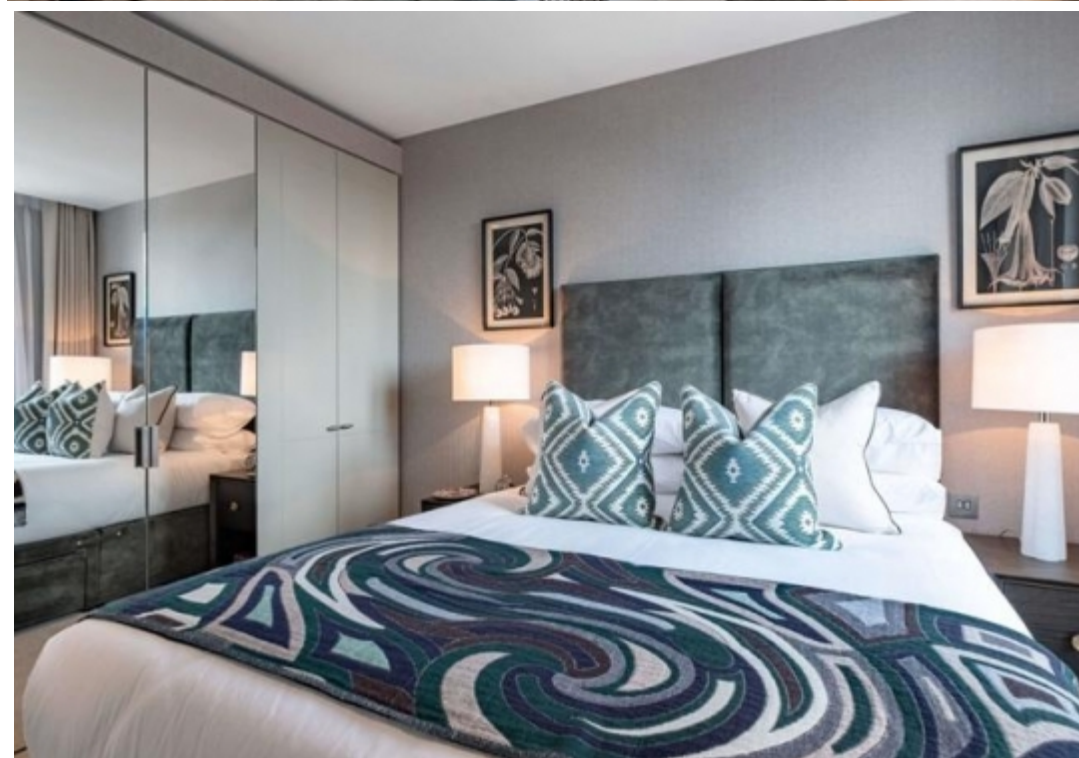
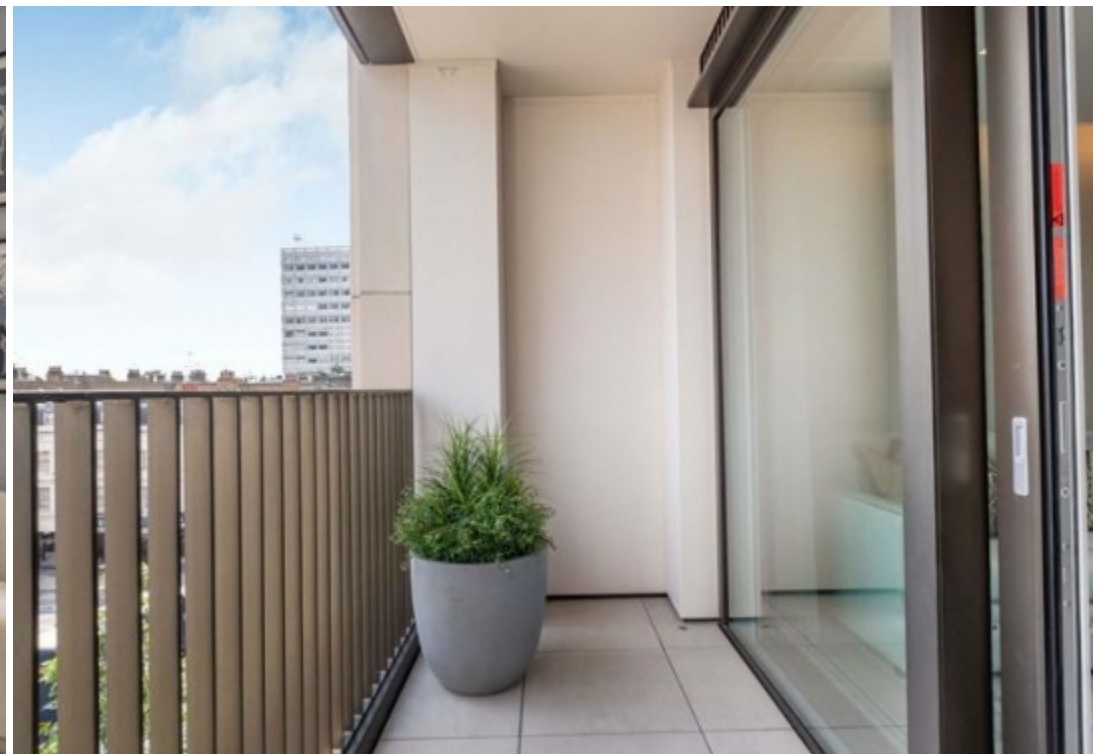
Property Description

Garrett Mansions is located between the waterways of Little Venice, Paddington Basin and fashionable Marylebone. This area is filled with boutiques and charming restaurants, all moments away from the stunning canals that this area is renowned for. Transport links are excellent including two Zone one underground stations within a two-minute walk and Paddington station a nine-minute walk away. This property is located on the 3rd floor and is beautifully presented, interior designed one bedroom flat located within a sought-after new build Berkeley development. The property comprises a modern and bright open plan kitchen reception room with space for entertaining and doors leading to a private balcony, a double bedroom with built in storage and a family bathroom. The development boasts excellent facilities including a swimming pool, sauna, steam room, cinema room, dining room and conference rooms. There are two passenger lifts, an on-site building manager, 24 hr concierge, CCTV and a video entry system as well as landscaped gardens and parking.

Main Particulars

Garrett Mansions is located between the waterways of Little Venice, Paddington Basin and fashionable Marylebone. This area is filled with boutiques and charming restaurants, all moments away from the stunning canals that this area is renowned for. Transport links are excellent including two Zone one underground stations within a two-minute walk and Paddington station a nine-minute walk away.

This property is located on the 3rd floor and is beautifully presented, interior designed one bedroom flat located within a sought-after new build Berkeley development. The property comprises a modern and bright open plan kitchen reception room with space for entertaining and doors leading to a private balcony, a double bedroom with built in storage and a family bathroom. The development boasts excellent facilities including a swimming pool, sauna, steam room, cinema room, dining room and conference rooms. There are two passenger lifts, an on-site building manager, 24 hr concierge, CCTV and a video entry system as well as landscaped gardens and parking.



Telephone: 0207 971 1152



www.bowleys.co.uk