



£1,525 Per Week

Merchant Square, Paddington

Flat | 3 Bedrooms | 2 Bathrooms

0207 971 1152



www.bowleys.co.uk



Step Inside

Key Features

- Concierge service
- Private underground parking spaces
- Available Furnished or Unfurnished
- Four minute walk from Edgware Road underground station
- 24 Hour Emergency Helpline & Service
- No agency fees when dealing directly with the Landlord

Property Description

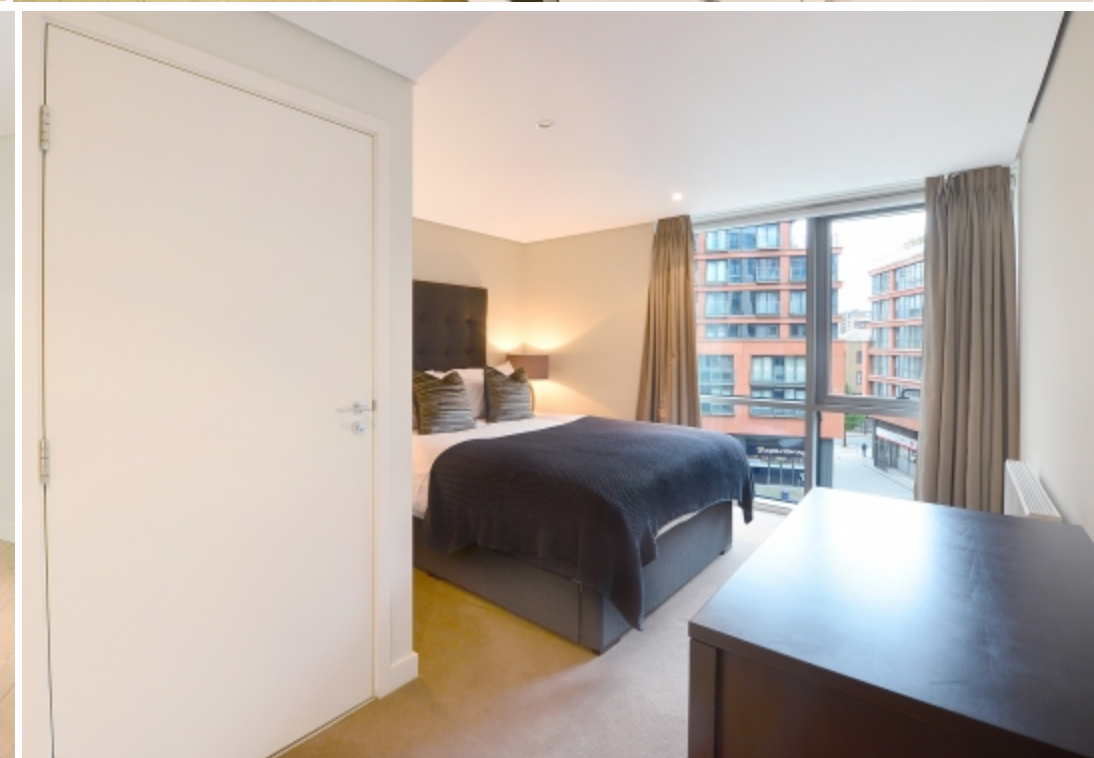
A stunning interior designed apartment with water views, set within the heart of the Paddington Basin. It comprises a beautiful reception room with superb views, a modern fully fitted open plan kitchen, three bedrooms, two bathrooms and ample storage space. The apartment is situated on the third floor of this prestigious building which features a concierge service, lift service and secure underground parking. The apartment offers easy access to superb transport links such as Paddington Train Station (Bakerloo, Hammersmith & City, Circle, District lines and Heathrow) Edgware Road (Circle, District and Bakerloo lines).

Main Particulars

A stunning interior designed apartment with water views, set within the heart of the Paddington Basin.

It comprises a beautiful reception room with superb views, a modern fully fitted open plan kitchen, three bedrooms, two bathrooms and ample storage space. The apartment is situated on the third floor of this prestigious building which features a concierge service, lift service and secure underground parking.

The apartment offers easy access to superb transport links such as Paddington Train Station (Bakerloo, Hammersmith & City, Circle, District lines and Heathrow) Edgware Road (Circle, District and Bakerloo lines).



Telephone: 0207 971 1152



www.bowleys.co.uk