



£1,395 Per Week

Merchant Square, Paddington

Flat | 3 Bedrooms | 2 Bathrooms

0207 971 1152



www.bowleys.co.uk



Step Inside

Key Features

- Stunning water views
- Superfast broadband
- Secure underground parking
- Pet friendly
- Available furnished or unfurnished
- Flexible rental terms

Property Description

A stunning interior designed apartment with stunning water views, set within the heart of the Paddington Basin. The apartments comprises a beautiful large reception room with superb views, a modern fully fitted open plan kitchen, three bedrooms, two bathrooms and ample storage space. The apartment is situated on the second floor of this prestigious building which features a concierge, lift service, and secure underground parking.

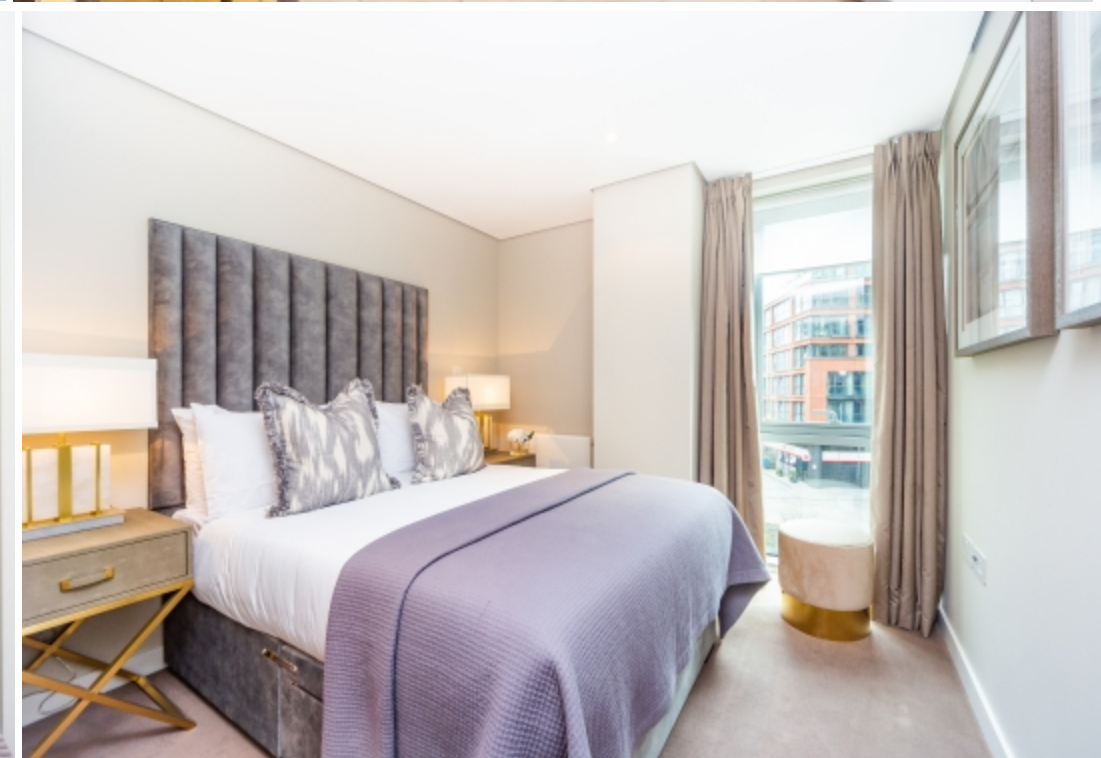
Main Particulars

A stunning interior designed apartment with stunning water views, set within the heart of the Paddington Basin.

The apartments comprises a beautiful large reception room with superb views, a modern fully fitted open plan kitchen, three bedrooms, two bathrooms and ample storage space. The apartment is situated on the second floor of this prestigious building which features a concierge, lift service, and secure underground parking.

The apartment offers easy access to superb transport links such as Paddington Train Station (Bakerloo, Hammersmith & City, Circle, District lines and Heathrow) Edgware Road (Circle, District and Bakerloo lines).

Residential Land is the owner and managing agent of this property. Rent directly from us and pay no agency fees. All of our tenants benefit from a dedicated building manager who is on hand to assist with any property related issues. We also employ a dedicated team of maintenance experts and provide a 24-hour emergency helpline.



Telephone: 0207 971 1152



www.bowleys.co.uk