



£795 Per Week

Pelham Court, Chelsea

Flat | 1 Bedroom | 1 Bathroom

0207 971 1152



www.bowleys.co.uk



Step Inside

Key Features

- Central Chelsea Location
- Walking distance to both South Kensington & Kings Road
- Porter Service
- Dedicated Building Manager
- 24-hour Emergency Service
- Views Over Gardens

Property Description

A spacious one double bedroom, interior designed fifth-floor apartment with study located in the heart of Chelsea. The flat comprises of one large bedroom which opens onto a study area. There is a very large double-sink bathroom with bath and shower and a good-sized reception/dining room with views over the communal gardens to the rear. The property is available to rent furnished or unfurnished.

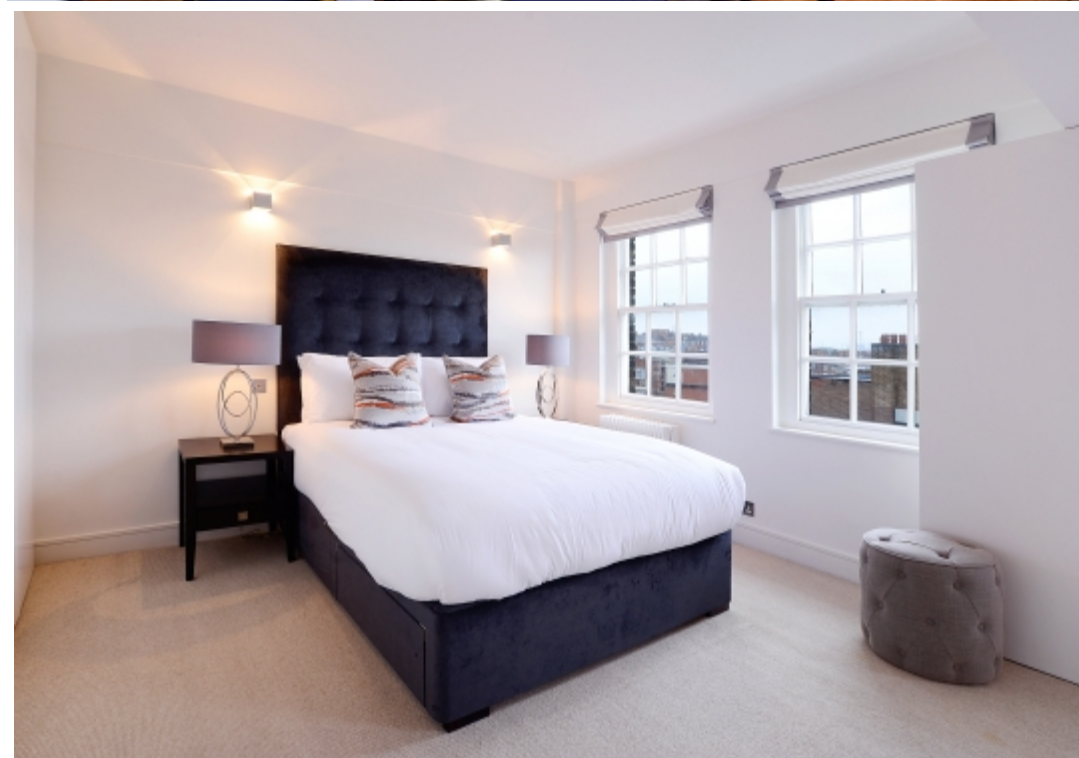
Main Particulars

A spacious one double bedroom, interior designed fifth-floor apartment with study located in the heart of Chelsea.

The flat comprises of one large bedroom which opens onto a study area. There is a very large double-sink bathroom with bath and shower and a good-sized reception/dining room with views over the communal gardens to the rear.

The property is available to rent furnished or unfurnished.

Residential Land is the owner and managing agent of this property. Rent directly from us and pay no agency fees. All our tenants benefit from a dedicated building manager who is on hand to assist with any property related issues. We also employ a dedicated team of maintenance experts and provide a 24-hour emergency helpline.



Telephone: 0207 971 1152



www.bowleys.co.uk