



£1,750 Weekly

Lexham Gardens, Kensington

Flat | 3 Bedrooms | 4 Bathrooms

0207 971 1152



www.bowleys.co.uk



Step Inside

Key Features

- Newly Refurbished Apartment Including New Modern Furniture
- Flexible rental terms
- Direct Access To Garden
- Lift Service
- Dedicated Building Manager
- Engineered Wood Flooring In All Living Areas

Property Description

This large, three double duplex bedroom ground and raised ground floor apartment is located perfectly on one of the best roads in Kensington.

Main Particulars

This large, three double duplex bedroom ground and raised ground floor apartment is located perfectly on one of the best roads in Kensington.

The apartment has been fully refurbished to the highest quality with the living space featuring several classic period features as well as traditional high ceilings all blended seamlessly with modern comforts such as engineered wood flooring and up-to-date appliances throughout.

The apartment also benefits from direct access to an impressive 40ft garden to the rear, highly sought after and rare in this prime location.

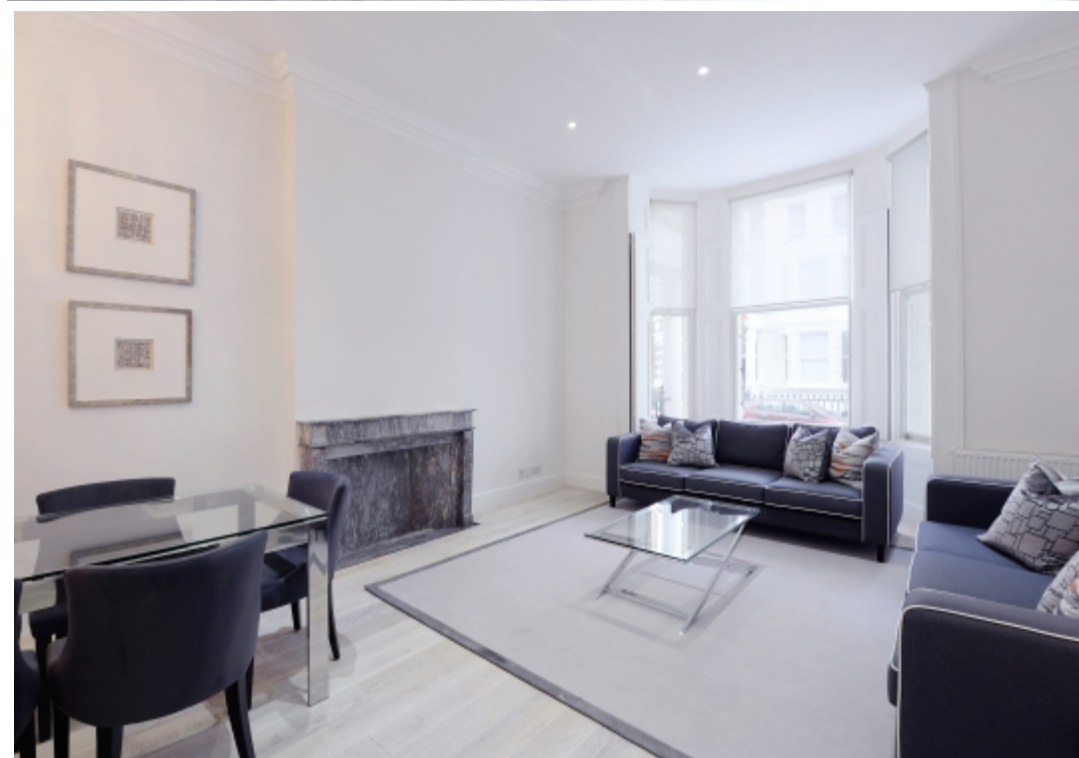
The property is located in Kensington and therefore benefits from the many amenities of Kensington High Street as well as several fantastic bars and restaurants within a five-minute walk.

Somerset Court comprises two adjoining Victorian white stucco fronted properties that have been converted into 14 apartments.

Close to High Street Kensington and Holland Park, the newly re-decorated apartments benefit from a lift and lots of natural light with some apartments benefiting from use of a beautiful south facing landscaped garden.

Somerset Court is equidistant to High Street Kensington and Gloucester Road tube stations. The property is within a 5 minute walk to beautiful Holland Park and Kensington Palace Gardens and is also close to Museum Mile where the Natural History, Science and world renowned Victoria and Albert Museums are located.

Pets at landlords discretion.



Telephone: 0207 971 1152



www.bowleys.co.uk