



£3,000,000

Montagu Square, London

Flat | 3 Bedrooms | 3 Bathrooms

0207 971 1152



[www.bowleys.co.uk](http://www.bowleys.co.uk)



# Step Inside

---

## Key Features

- Garden Square
- Three Bedrooms
- Three Bathrooms
- Close To Hyde Park
- High Specification
- Beautiful Square

## Property Description

A fantastic three bedroom, three bathrooms fully refurbished apartment in the heart of Marylebone. The property is over three floors, consisting of two bedrooms on the lower ground and the master bedroom on the first floor. The flat has access to Montagu Square gardens

## Main Particulars

A fantastic three bedroom, three bathrooms fully refurbished apartment in the heart of Marylebone. The property is over three floors, consisting of two bedrooms on the lower ground and the master bedroom on the first floor. The flat has access to Montagu Square gardens

Montagu Square is walking distance to Marylebone High Street (0.5 miles) and the West End. Close by is two famous parks, Hyde Park (0.5 miles) and Regent's Park (0.7 miles).

reception 2



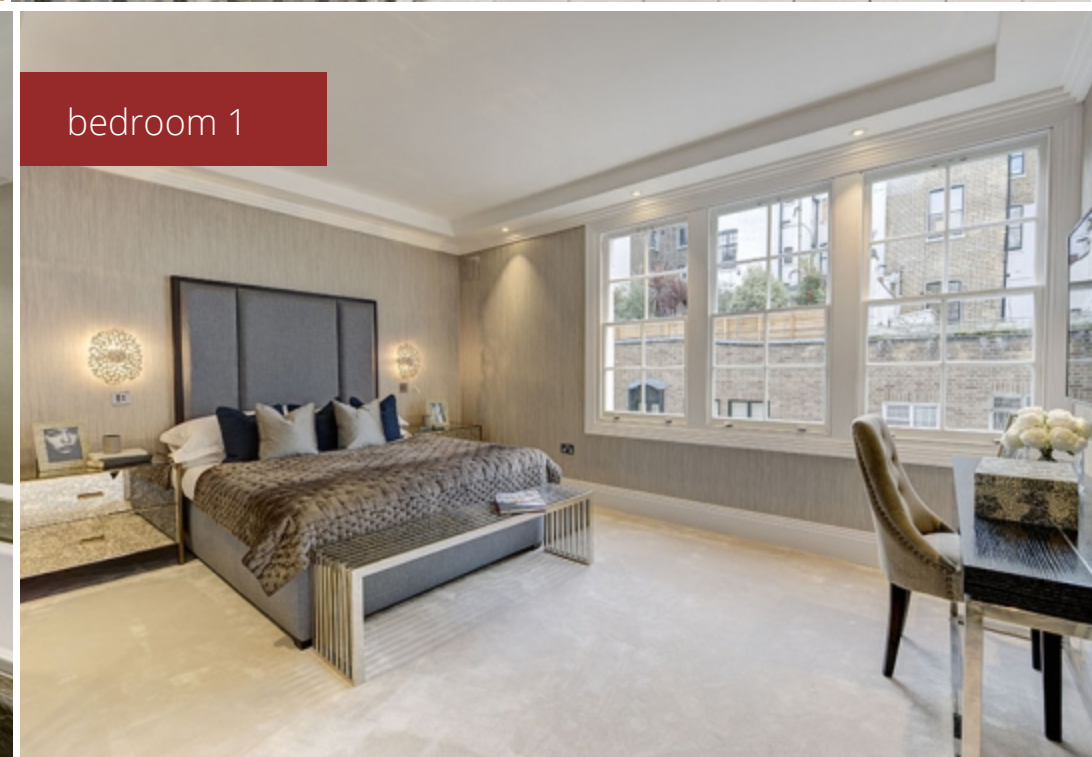
terrace



bathroom



bedroom 1



Telephone: 0207 971 1152



---

[www.bowleys.co.uk](http://www.bowleys.co.uk)